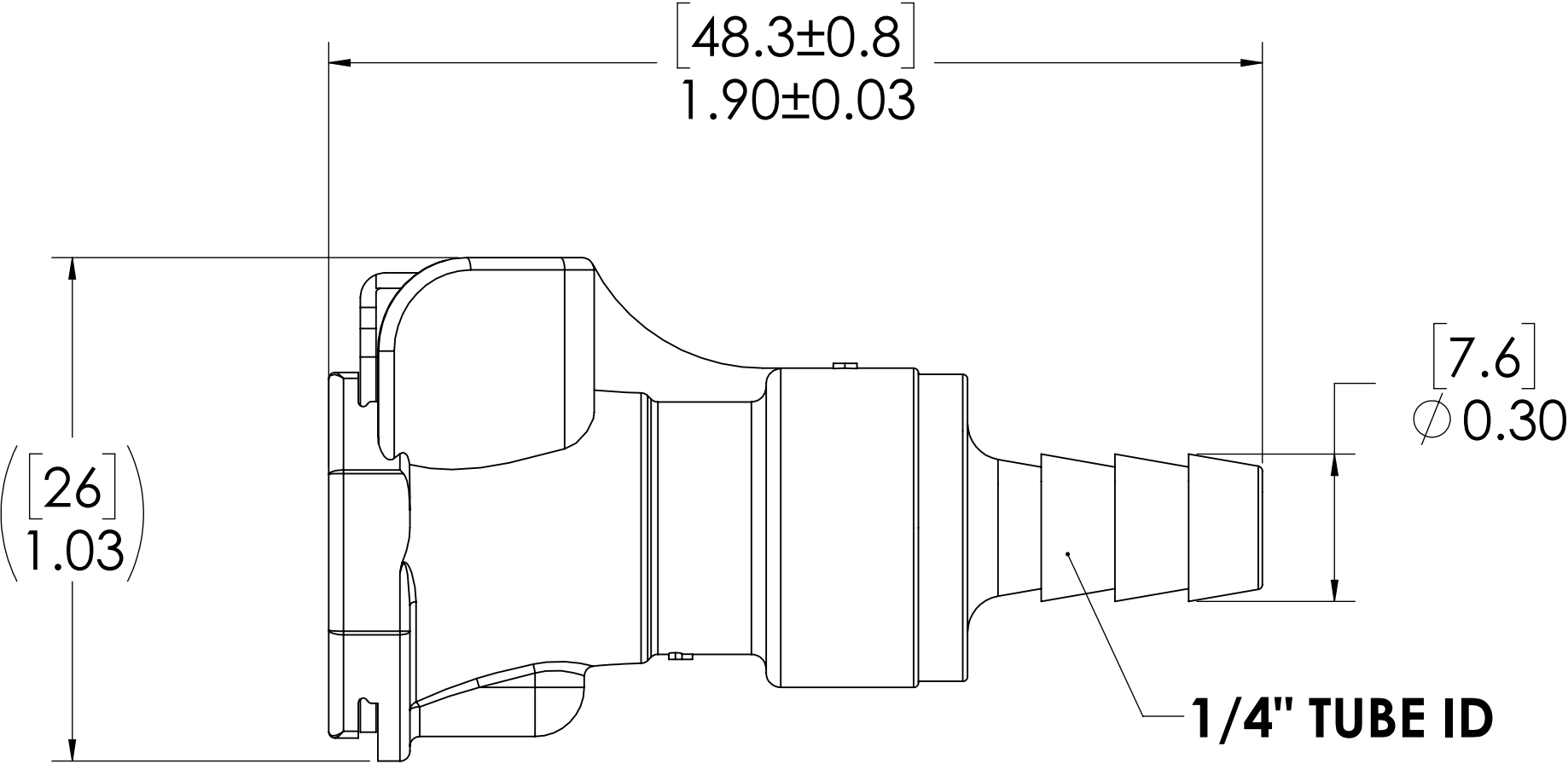
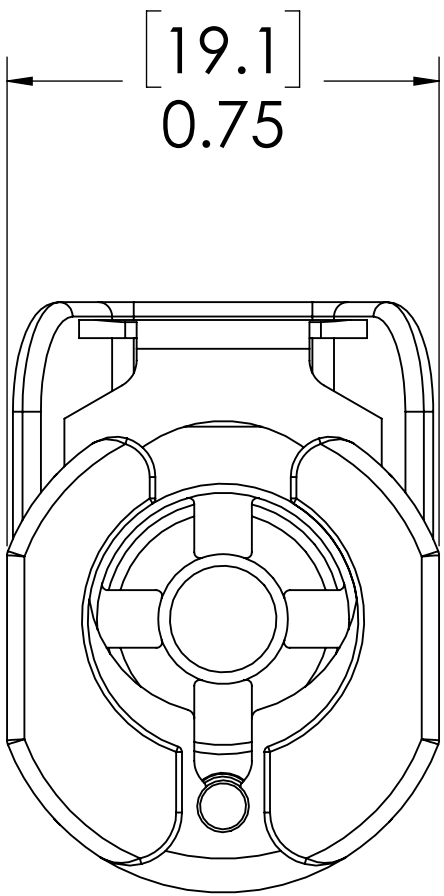
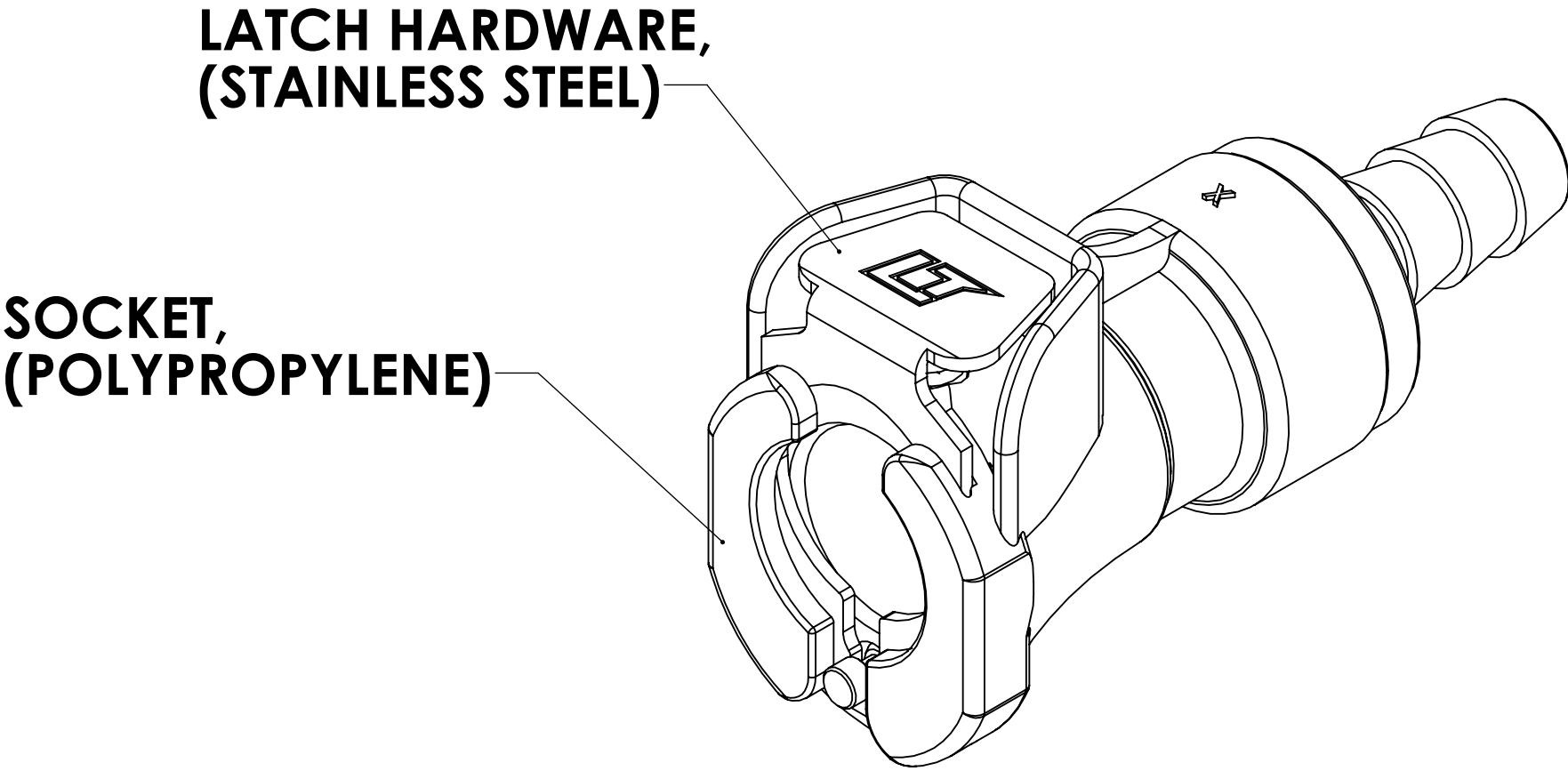


REVISIONS						
SHEET	ZONE	REV.	ECO	DESCRIPTION	DATE	APPROVED
1	ALL	A	50253	INITIAL RELEASE	6/28/2018	HRC



FOR REFERENCE ONLY

- NOTES:**
1. MATERIAL: POLYPROPYLENE
 2. COLOR: MOLDED ALMOND

UNLESS OTHERWISE SPECIFIED:				LINKTECH ANALOGICAL CORP.		
DIMENSIONS ARE IN INCHES TOLERANCES: FRACTIONAL ± 1/32 ANGULAR, MACH ± 0.5 ONE PLACE DECIMAL ± 0.1 TWO PLACE DECIMAL ± 0.01 THREE PLACE DECIMAL ± 0.005 TWO PLACE DUAL (mm) [± 0.12]	DRAWN	CGS	4/18/18	PART NO: 40PP-S2-04MALD DESCRIPTION: LinkTech 40PP Series Straight Female, Non-valved, 1/4" HB, Molded Almond Color, Polypropylene		
	CHECKED	HRC	4/18/18			
	ENG APPR.	HRC	6/28/18			
	MFG APPR.	BDB	6/28/18			
PROPRIETARY AND CONFIDENTIAL				PRODUCTION	LS	6/28/18
THE INFORMATION CONTAINED IN THIS DRAWING IS THE SOLE PROPERTY OF LINKTECH LLC. ANY REPRODUCTION OR DISCLOSURE IN PART OR AS A WHOLE WITHOUT THE WRITTEN PERMISSION OF LINKTECH LLC IS STRICTLY PROHIBITED.				COMMENTS:		
				SIZE	DWG. NO.	REV
				C	40PP400129	A
SCALE: NTS				WEIGHT:	SHEET 1 OF 1	